

ANNUAL REPORT 2025



EDWINS
LEADERSHIP & RESTAURANT
Institute

A WORD OF APPRECIATION

Dear Friends,

2025 has been a transformative year for EDWINS—one defined by growth, resilience, and deepened impact. None of it would have been possible without the community that continues to believe in our mission and the people we serve.

One of the most significant milestones this year was our move to the historic Nighttown building in Cleveland Heights. This transition was more than a change of address; it was a commitment to our students and to the future of EDWINS. Our expanded space now allows us to deliver enhanced training across four distinct culinary and hospitality ventures under one roof, creating more hands-on learning opportunities and clearer career pathways. It also supports the continued expansion of our tablet-based education program, which now reaches learners in 49 states and educates hundreds of thousands nationwide

Another highlight of 2025 was the honor of being named a James Beard Foundation Impact Award honoree. While this recognition was presented to me personally, it belongs to the entire EDWINS community. It reflects the dedication of our exceptional staff, the determination of our 650 graduates, and the shared belief that second chances change lives—not just for individuals, but for families and communities.

Over the years, EDWINS has responded to the complex realities of reentry by building a comprehensive support system. In 2025, that commitment remained strong. From housing and childcare to workforce training and case management, we continue to remove barriers so our students can focus on rebuilding their lives with dignity and purpose. Each new program, facility, and partnership represents our belief that opportunity, when paired with accountability and support, creates lasting change.

Quite simply, EDWINS is what it is because of the people who stand alongside this work—our students, graduates, staff, partners, and supporters. Together, we are redefining what reentry can look like across the nation.

Thank you for being part of this journey and for helping make 2025 a year of meaningful progress.

Eat Well. Do Good.



BRANDON E. CHROSTOWSKI
FOUNDER, PRESIDENT AND CEO



ZACHARY'S CULINARY JOURNEY: FROM ARIZONA TO CLEVELAND

"I took the tablet program while in jail in Maricopa County Arizona and wanted to come to EDWINS for two years. Derrick (Director of Community Engagement) checked in with me regularly over that time to make sure I got here. I'm excited to be here and grow a passion that I've always had in culinary and hospitality. The chefs really push you and challenge you. Instead of fighting back, I've embraced it and try to make sure that I do everything perfectly."

EDWINS

BY THE NUMBERS

650+

ALUMNI



95%

EMPLOYMENT RATE
30 DAYS AFTER
GRADUATION

2400

POST RELEASE LIFE PLANS
CREATED FOR INCARCERATED
INDIVIDUALS

5



RESIDENTIAL
BUILDINGS

49 STATES

WITH OUR
PRISON TABLET
EDUCATION
PROGRAM



ON THE EDWINS
SECOND CHANCE
CAMPUS



13+ YEARS

**TEACHING AN IN-DEMAND
TRADE IN CULINARY ARTS**

1.4%

**RECIDIVISM RATE FOR
EDWINS GRADUATES**

105

**TABLET GRADUATES
HAVE ENROLLED AT
EDWINS**

24.5K

**INCARCERATED
INDIVIDUALS**

HAVE COMPLETED THE TABLET PROGRAM IN PRISONS

1.5M



**INSTRUCTIONAL HOURS
COMPLETED BY OUR
INCARCERATED STUDENTS**

1650

**FACILITIES OFFER
OUR CURRICULUM
ON TABLETS**

CHEF CHROSTOWSKI NAMED JAMES BEARD FOUNDATION IMPACT AWARD WINNER





JENAYA: EDWINS PROVIDES A NEEDED SPACE FOR REBIRTH

“Everyone should know that there’s a lot of people that need EDWINS. They don’t want to relive their past. They are looking for a rebirth and to redefine themselves. This is the space for that. There are so many individuals here that need everything they offer- they need access to housing, they need the support from case managers, they need family meal. EDWINS gives people stability and a road map to success if you put in the work.”

THE FAMILY CENTER

Offers **free childcare** to every EDWINS student



Ensures that EDWINS **parents** can attend both class and work



Kids stay **healthy** with nutritious meals prepared by EDWINS staff, outdoor playtime, and walking field trips to local parks



Children are **engaged** through hands-on learning, early **literacy** activities, and **individualized** support



21 families have benefitted from Family Center care since its opening

SECOND CHANCE CAMPUS

Housing for EDWINS students, alumni, and families in **five residential buildings**



EDWINS hosted over ten corporate and school **volunteer days** on campus this year



This **Thanksgiving**, (and on all major holidays), residents gathered for a **home-cooked meal**



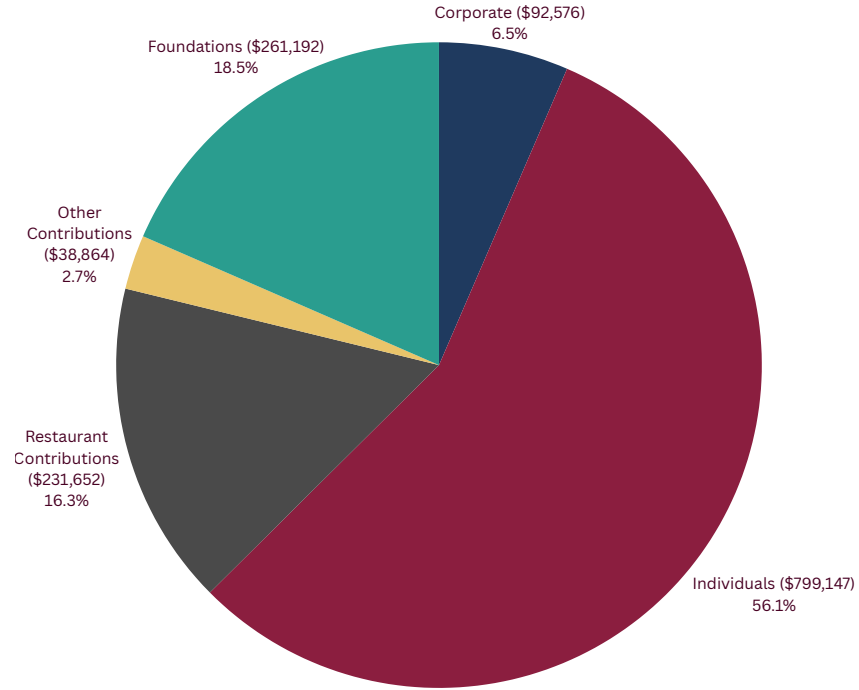
prepared by our Dean of Students, Heather



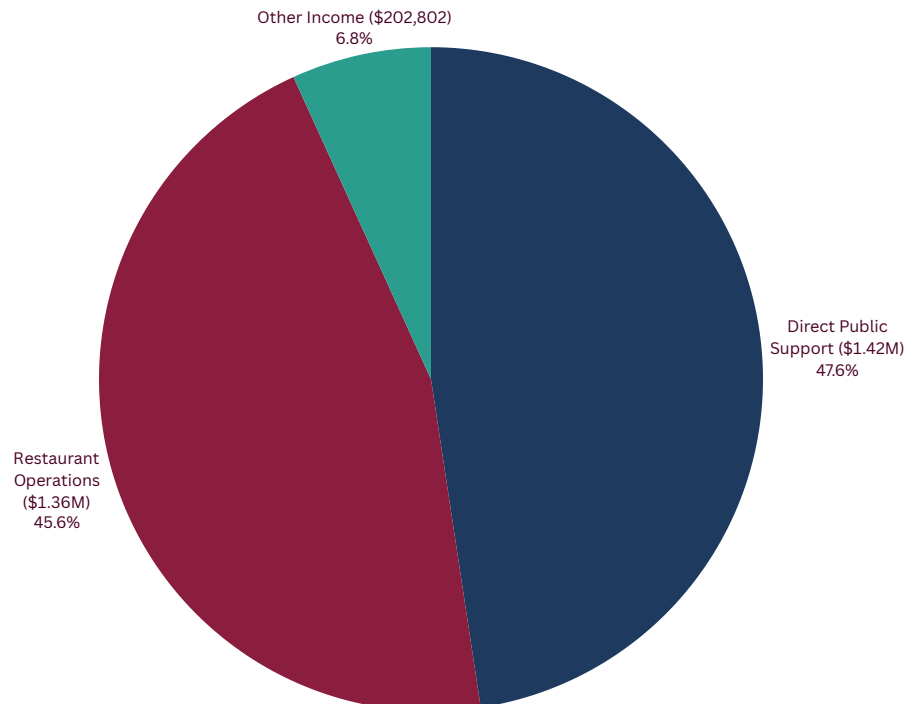
A grant from the Cleveland Garden Club

is allowing us to reimagine the **garden** area, including areas for gathering with fellow residents as well as quiet reflection

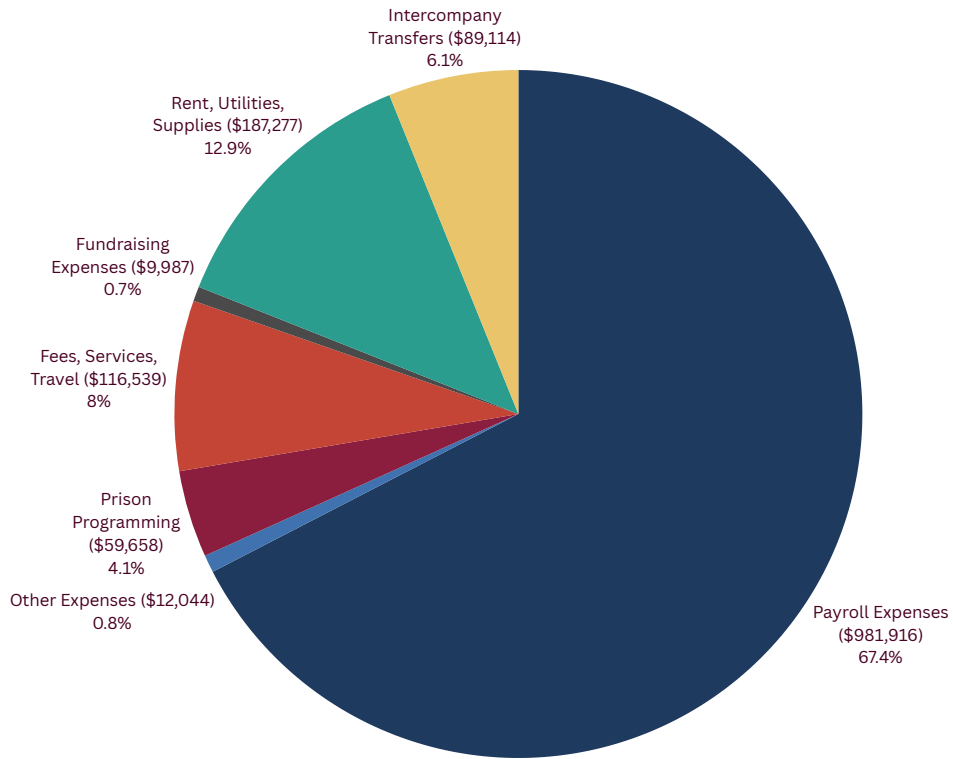
TOTAL CONTRIBUTIONS- \$1,425,433



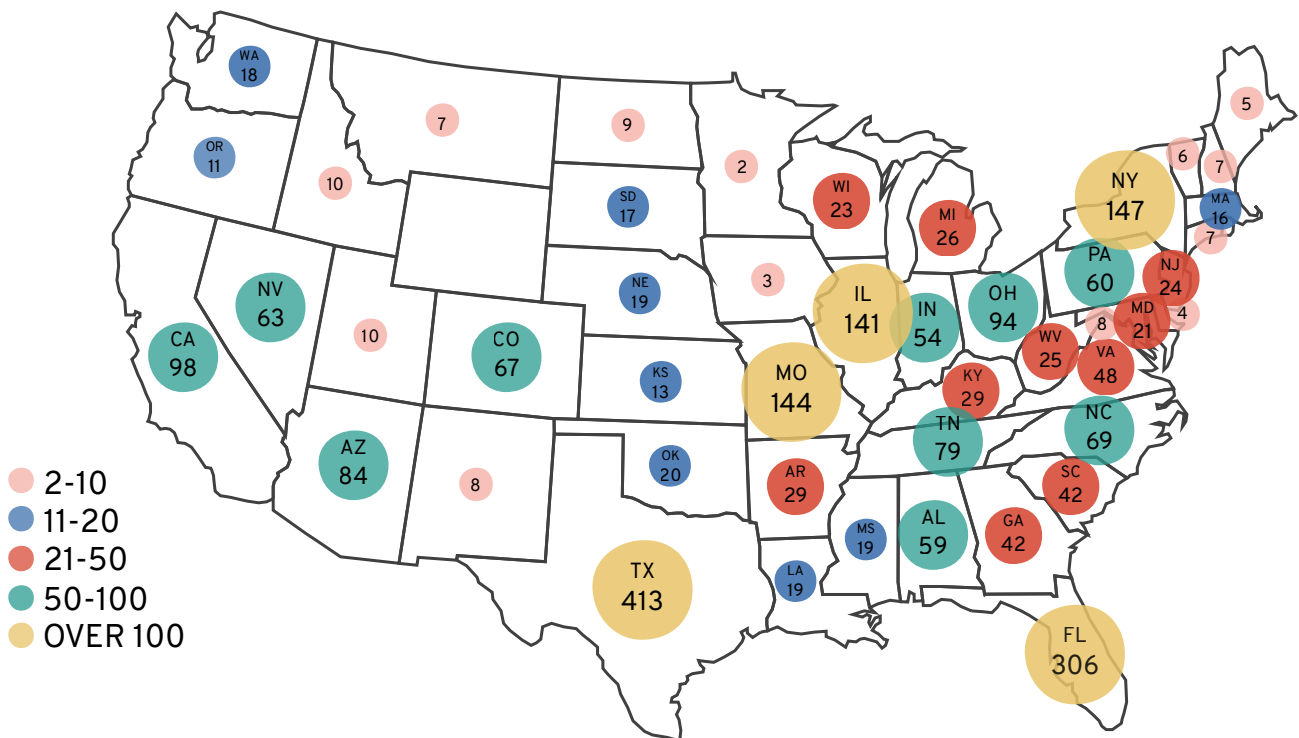
TOTAL INCOME- \$2,991,710



PROGRAM EXPENSES- \$1,456,535



POST-RELEASE LIFE PLANS CREATED PER STATE IN THE PAST YEAR



EXPANDING OPPORTUNITY, TOGETHER

In 2025, EDWINS deepened its impact by expanding access to education, stability, and second chances for justice-impacted individuals nationwide.

What Your Support Made Possible

- Opened a new home in Cleveland Heights' historic Nighthtown building, expanding hands-on training across four culinary and hospitality ventures
- Scaled our nationally available tablet-based education program to reach learners in 49 states and hundreds of thousands nationwide
- Earned national recognition at the James Beard Foundation Impact Awards
- Continued comprehensive reentry supports including housing, childcare, workforce training, and individualized case management
- Strengthened career pathways that lead to stable employment and long-term self-sufficiency for our graduates
- Expanded a growing national alumni community of more than 650 graduates

The Opportunity Ahead

As demand grows, EDWINS is prepared to extend its reach and deepen support for returning citizens across the United States.

With continued partnership, we will:

- Expand our national tablet-based education program and post-release life planning tools
- Provide housing for every out-of-state student as enrollment grows
- Increase classroom and learning space to serve more students annually
- Strengthen wraparound services that remove barriers for our students and reduce attrition
- Deepen alumni engagement to support long-term success beyond graduation

Every student represents a life redirected, a family strengthened, and a community made safer and more vibrant. This progress is possible because of our supporters who believe that opportunity changes lives.

Thank you for helping build second chances that last.